



The Trust Blueprint

What Britannica Studio's Global Beta Test Reveals About the Future of Responsible AI in Education

How educators are redefining what AI must deliver, and why trust, transparency, and workflow matter most



Table of Contents

- 03 | Executive Summary**
- 04 | The AI Adoption Paradox in Schools**
- 05 | Research Context: The Britannica Studio Beta Study**
- 07 | Key Finding 1: Trust Is Built Through Transparency, Not Promises**
- 08 | Key Finding 2: Differentiation Is the Primary Instructional Bottleneck**
- 09 | Key Finding 3: Simplified Workflows Save Time and Build Teacher Confidence**
- 10 | Key Finding 4: Responsible AI Is a Pedagogical Requirement**
- 11 | Implications for Schools Globally**
- 12 | What Responsible AI Design Looks Like in Practice**
- 13 | Conclusion: From AI Hype to Instructional Infrastructure**

These findings are based on a limited beta cohort and are intended to reflect directional trends rather than statistically conclusive results.

Executive Summary

Artificial intelligence is rapidly becoming embedded in educational practice globally. Teachers are using AI tools to brainstorm ideas, adapt texts, generate questions, and accelerate lesson preparation. Schools are exploring how AI can improve efficiency, support differentiation, and prepare students for an AI-rich future.

Yet this momentum contributes to a growing tension. Educators want the benefits of AI, but many do not trust the tools currently available. Outputs must be checked for accuracy. Sources are unclear or absent. Content is often oversimplified. Differentiation remains labour-intensive. And AI tools frequently exist as isolated features rather than coherent instructional systems.

To better understand what responsible, classroom-ready AI should look like, Britannica Education conducted a global beta test of Britannica Studio, a teacher-first AI workspace built entirely on Britannica's verified and unbiased content. During the beta test period, hundreds of educators across roles, grade levels, and subject areas used Studio in authentic instructional contexts and provided structured feedback through surveys and interviews.

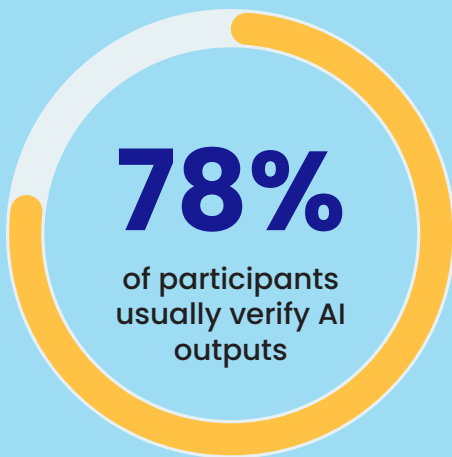
The findings reveal a clear pattern: When AI draws from verified content, facilitates real instructional workflows, and gives educators control, users increasingly trust the output, can more easily differentiate learning, and reclaim instructional time by reducing rework, verification, and fragmented planning tasks. These results point toward a new model for AI in education, one that prioritises accuracy, transparency, rigor, and usability over novelty or feature overload.

This whitepaper shares what was learned from the Studio beta test and outlines what these insights mean for schools navigating AI adoption.

The AI Adoption Paradox in Schools

AI's presence in education is no longer hypothetical. Educators already use it, often informally, to support daily planning and instruction. Meanwhile, schools need to establish policies and guidance that ensure AI is used responsibly, equitably, and safely.

This creates a paradox. Teachers recognise AI's potential to save time and expand access to learning, yet many express persistent discomfort with the reliability of AI outputs. In practice, this discomfort manifests in constant fact-checking, rewriting, and hesitation to use AI-generated materials directly with students, often extending the time required to plan and prepare instructional resources.



Research from the Studio beta test confirms this reality. More than 78 percent of participating educators reported that they frequently or always verify the accuracy of AI outputs. This behaviour suggests that trust is one of the most influential barriers to effective AI adoption in classrooms.

Compounding this challenge is the fragmentation of the AI tool landscape. Many platforms offer dozens of narrowly focused tools, leaving educators to assemble instruction piece by piece. Rather than reducing cognitive load, this "tool sprawl" often increases frustration, decision fatigue, and the amount of time educators spend assembling instructional materials.

For AI to meaningfully support teaching and learning, it must address the core challenges educators face today: concerns about accuracy and trustability, fragmented tool landscapes that increase cognitive load, and the time required to adapt materials for learners with diverse needs. The Studio beta test provided a unique opportunity to examine what happens when AI is intentionally designed to address these realities.



Research Context: The Britannica Studio Beta Study

The Britannica Studio beta test was designed to assess both product viability and instructional fit in authentic educational settings. The research sought to answer four core questions:

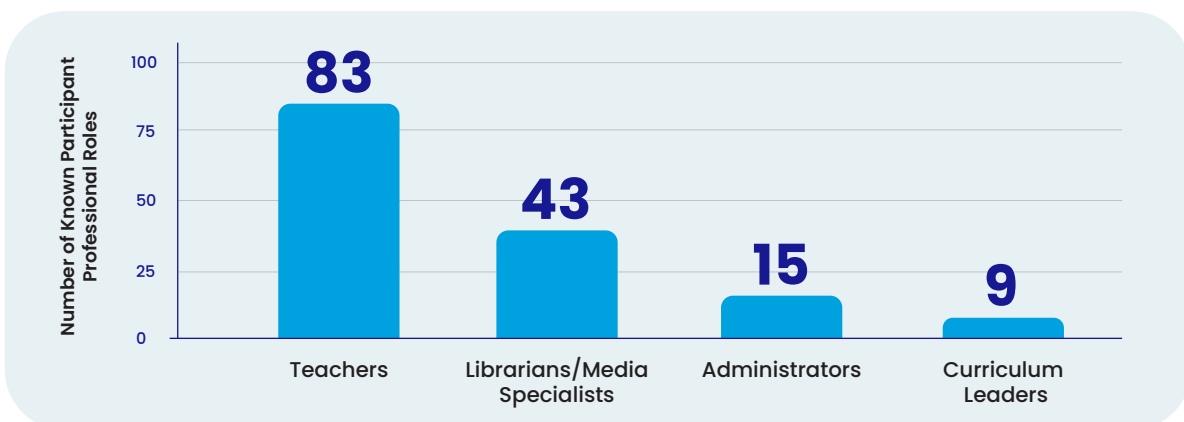
- **How does trust in AI change with continued use?**
- **Is Studio designed to support sustained use in real classrooms?**
- **Which features or outcomes most strongly drive perceived value?**
- **What unmet needs remain for educators adopting AI?**



Participants

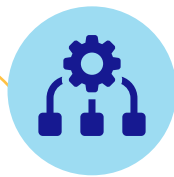
A total of 293 educators participated across targeted and general cohorts. Participants represented a broad range of professional roles, including classroom teachers, librarians and media specialists, instructional coaches, curriculum leaders, and administrators.

Notably, approximately 70 percent of participants were not active Britannica customers at the time of the beta test. This provided an opportunity to have Studio evaluated by an audience largely unfamiliar with Britannica products and to examine whether trust, perceived value, and instructional relevance emerged through use rather than brand familiarity.



The largest participant group consisted of experienced classroom teachers. These roles are instrumental in the adoption of instructional resources for schools, serving as the bridge between curriculum design and the practical implementation of digital tools. The Beta results highlight how teachers influence the way that new technologies are not only adopted, but effectively integrated into the pedagogical framework of the school.

Educators taught across the full grade continuum, from early childhood through secondary and higher education, and represented a wide range of subject areas, including English language arts, science, math, social studies, English language learning/multilingual learning, and technology.



Methodology

Participants were granted full, unrestricted access to Britannica Studio for up to eight weeks, allowing for sustained, self-directed use in real instructional contexts. No usage requirements or constraints were imposed, enabling educators to engage with the platform in ways that reflected their authentic planning needs and workflows.

The study included four surveys administered at different stages of the beta testing experience as well as follow-up interviews with several participants. Qualitative responses were analysed using thematic coding to identify recurring instructional needs, perceptions of value, and barriers to adoption. Particular attention was given to references related to trust, differentiation, workflow coherence, and instructional rigor.



Key Finding 1: Trust Is Built Through Transparency, Not Promises

One of the most significant findings from the beta test was the degree to which educator trust increased over time.

61%



Early impressions showed that 61 percent (10 of 16) of respondents reported feeling “very confident” in the accuracy of Studio’s outputs.

91%



After continued use, that figure rose to 91 percent (12 of 13 respondents), with no respondents reporting low confidence in the final survey.

While the sample size was small, this directional shift suggests that sustained use of Britannica Studio may increase educator confidence in AI-generated instructional materials.

This pattern suggests that trust in AI is not static; it is shaped by experience. Specifically, trust is supported by consistent exposure to accurate outputs and transparent sourcing.

Educators repeatedly cited the importance of knowing where information comes from. Participants reported that Studio’s clear source links, which trace outputs back to Britannica’s verified content, reduced the need for manual verification and gave teachers confidence to use materials directly with students.

Importantly, trust was not described as a vague feeling. It was framed in practical terms: fewer corrections, less rework, and greater peace of mind. As one teacher noted, other AI tools felt “vague and nondescript,” while Studio’s materials were “trustworthy and detailed.”

The quality of the materials has been unmatched. The information is trustworthy and detailed. All other AI writing engines or article generators that I have used are vague and nondescript.”

– Teacher | Beta Tester

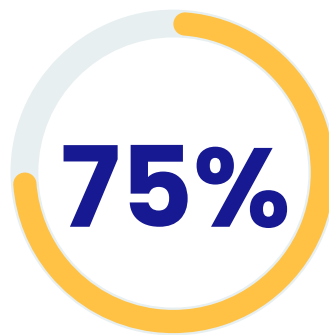


Implication: Trust is not a marketing claim; it is an instructional outcome. When AI systems are transparent and reliable, they reduce cognitive load and earn teachers’ confidence.



Key Finding 2: Differentiation Is the Primary Instructional Bottleneck

Across all stages of the beta test, content differentiation emerged as one of Studio's most frequently cited value drivers.



By the end of the test period, **nearly 75 percent of respondents** positively referenced levelling, grade adaptation, or differentiation.

Educators initially described manual differentiation, or adapting materials to meet learners' diverse needs, as the most challenging part of lesson planning. While essential, supporting multilingual learners, emerging readers, and advanced students typically requires creating multiple versions of the same material, a process that is rarely feasible within a workday's time constraints.

Studio's ability to generate multiple reading levels simultaneously was consistently identified as a standout feature. Participants emphasised that the value was not just in simplifying text but in preserving key ideas and instructional rigor across versions.

For librarians and media specialists in particular, this capability expanded their ability to efficiently support teachers across grade levels and subjects.



Implication: Differentiation is not a "nice to have." It is a core instructional need. AI that cannot deliver accurate, rigorous, multilevel content at scale will continue to fall short of classroom realities.

Key Finding 3: Simplified Workflows Save Time and Build Teacher Confidence

Studio's Build It, Teach It tool enabled educators to move seamlessly from content creation to levelling, summarisation, vocabulary development, and assessment all within a single workspace, rather than forcing educators to jump between tools. Notably, perceived value increased with continued use. Participants reported that as they became more familiar with the workflow, their time savings increased and their instructional confidence grew. This finding highlights the importance of workflow coherence in shaping educators' perceptions of value and usability.

In recent pilots across Africa, international school leaders identified Britannica Studio as a 'gamechanger' for digital classrooms. Educators reported reclaiming hours of prep time through streamlined resource discovery, significantly increasing efficiency without increasing teacher workload.

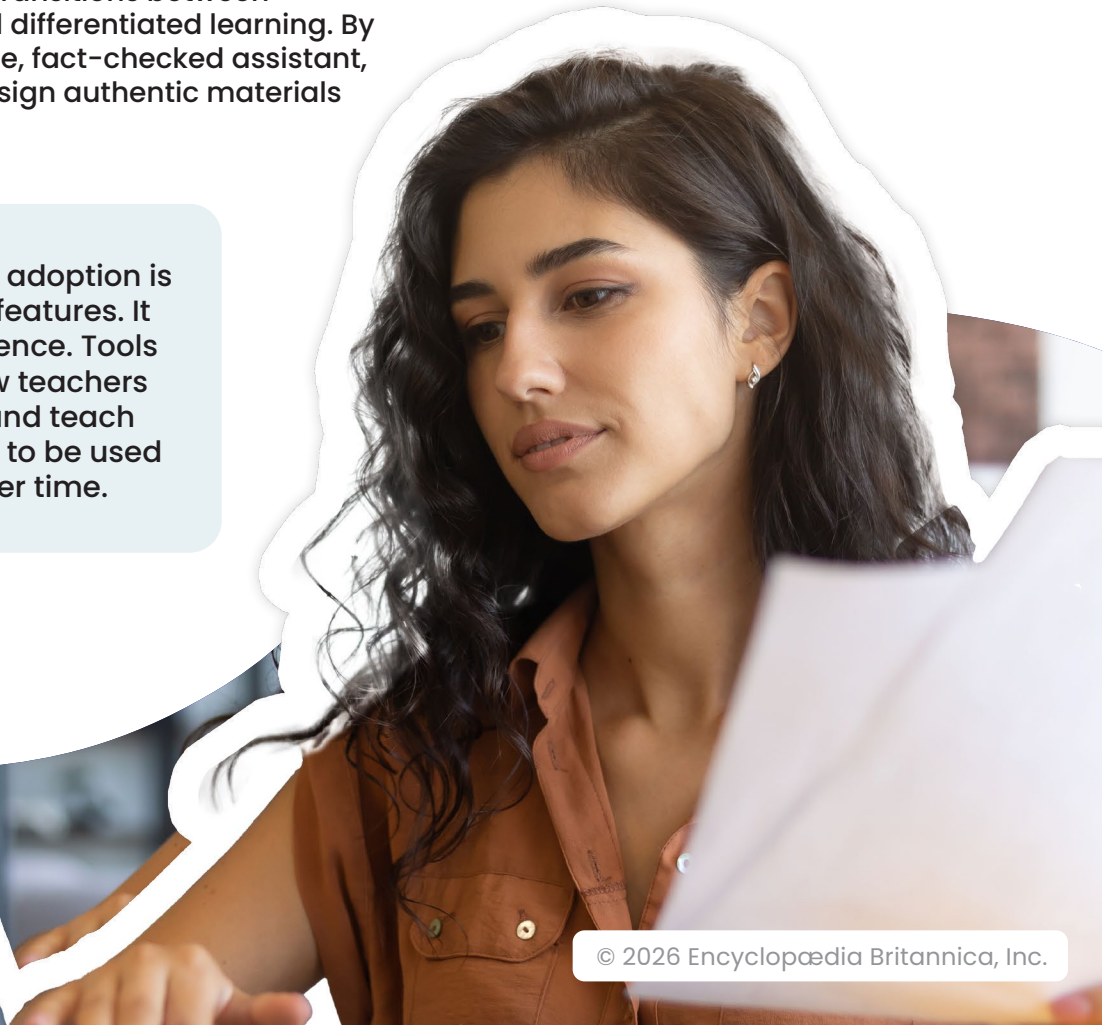
The feedback highlighted the platform's versatility in supporting high-stakes curriculum delivery with curated content enabling seamless transitions between personalised instruction and differentiated learning. By transforming AI into a reliable, fact-checked assistant, Studio allows teachers to design authentic materials with speed and confidence.

“Unlike other AI driven tools, Britannica Studio has features that teachers can use in one place where reading passages can be produced within minutes then differentiated with a click to meet the needs of all students. When introducing new topics, the vocabulary builder lists key vocabulary related to a topic and produces quizzes which also have a marking sheet. These features have significantly reduced our teachers' workload and freed up time for them to focus on learning in the classroom.”

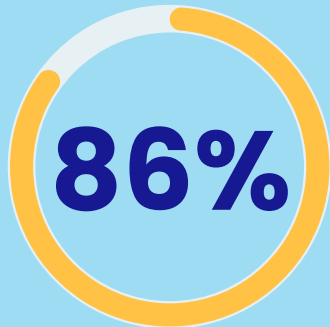
– Yernar Akkisev, Principal, Quantum STEM School (Kazakhstan)



Implication: AI adoption is not just about features. It is about coherence. Tools that mirror how teachers actually plan and teach are more likely to be used and trusted over time.



Key Finding 4: Responsible AI Is a Pedagogical Requirement



The beta study revealed a strong appetite for guidance around responsible AI use, with **86 percent of survey respondents expressing interest in additional AI training** and many describing uncertainty about how to model ethical AI use for students.

Educators were clear that AI should support, not replace, professional judgment. They valued the ability to edit, refine, and adapt outputs, ensuring that materials reflected their instructional intent and student needs.

Studio's transparent sourcing also emerged as a tool for AI literacy. Educators reported that Studio's visible sources helped them demonstrate how to evaluate information, which is a critical skill for students navigating AI-generated content.



Implication: Responsible AI use is not only about safety and compliance. It is about pedagogy. Tools that spotlight user agency and decision-making support both teaching and learning.





Implications for Schools Globally

Taken together, the beta study findings suggest several important implications for institutional AI adoption:

- 1** Verified source content reduces instructional risk by minimising misinformation and rework.
- 2** Workflow-based AI reduces teacher burnout by consolidating tasks into a single system and reducing the amount of time educators spend assembling, revising, and verifying instructional materials.
- 3** High-quality differentiation supports equity without sacrificing rigor.
- 4** Transparent sourcing supports AI literacy and aligns with emerging usage standards.
- 5** Teacher-centered design increases adoption and sustainability.

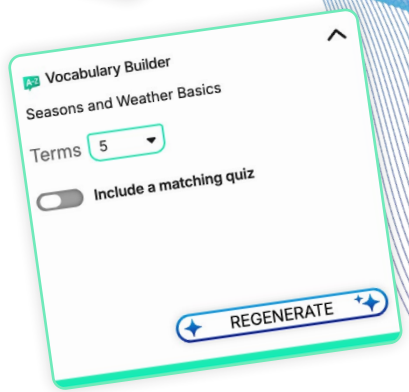
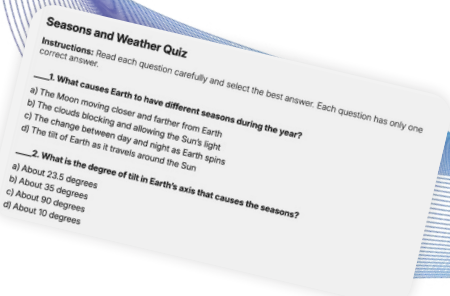
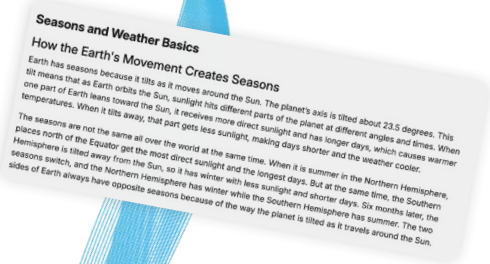
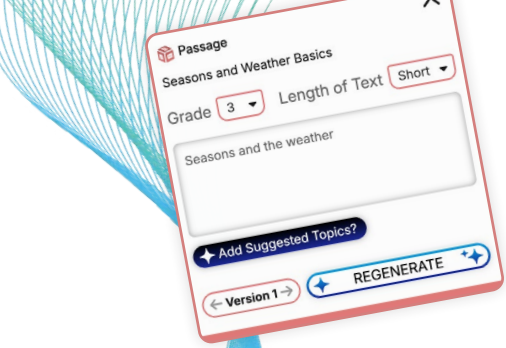
These insights are consistent with global pedagogical guidelines and regional digital strategies across EMEA, emphasising that AI must be transparent, designed to drive educational efficiency, and used responsibly with human oversight.

What Responsible AI Design Looks Like in Practice

Britannica Studio reflects these principles in concrete ways:

- ✦ It draws from Britannica's fact-checked, verified, and unbiased content.
- ✦ Every output includes transparent source links.
- ✦ Educators control tone, grade level, and complexity.
- ✦ Differentiation is embedded into the workflow.
- ✦ The platform is designed to support full instructional planning without isolating tasks.

Rather than positioning AI as a shortcut, Studio positions it as an instructional partner, one that respects the complexity of teaching.





Conclusion: From AI Hype to Instructional Infrastructure

The future of AI in education will not be defined by how quickly content can be generated but by how responsibly it is designed and used.

Findings from the Britannica Studio beta test show that when AI is derived from verified knowledge, transparent in its sources, and aligned to real instructional workflows, educators respond with confidence rather than caution.

This evidence points to a clear path forward, one that prioritises trust, rigor, and respect for the art of teaching.



Britannica STUDIO

**Transform Trusted Content
into Teaching Power**

britannicaeducation.com/uk/britannica-studio

